



四川畅安穿山甲科技有限公司

Sichuan Chang'an Chuanshanjia Technology Co., Ltd

Tel:400-6020-850

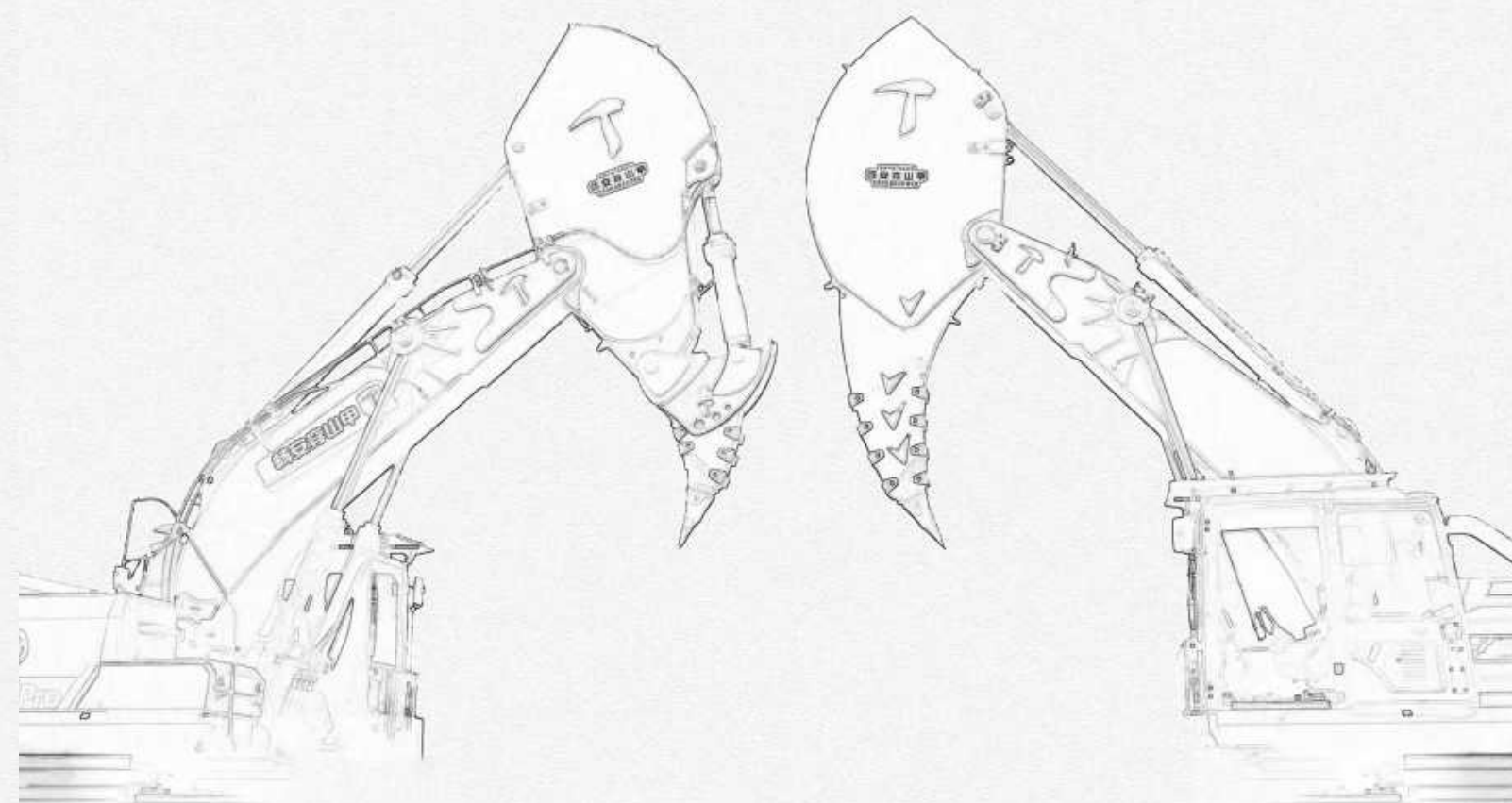
CN:www.cancsj.com

EN:www.cncacsj.com

Email:global@cancsj.com

地址:中国四川省成都市武侯区环球中心S2-1003

Add: S2-1003 Global Center, Wuhou District, Chengdu City, Sichuan Province, China



“成为全球信赖，  
并持续提供独具价值的工程机械属具公司”

"Become a globally trusted construction machinery attachment company  
that continues to provide unique value"

## 目录

企业简介 — 01  
Company profile

发展轨迹 — 03  
Development trajectory

荣誉资质 — 05  
Honors and qualifications

企业使命 — 07  
Mission

全球市场 — 09  
Global market

生产环境 — 11  
Production environment

产品介绍 — 13  
Product introduction

解决方案 — 27  
Solutions

安装指南 — 41  
Installation guide

品牌型号 — 45  
Brands and models





## 四川畅安穿山甲科技有限公司

成立于2017年，注册资本1000万元.坐落于享有“天府之国”美誉的成都，是一家致力于探索土石方工程机械施工路径的科技公司。

公司团队拥有丰富的土石方施工经验，秉承“科技创新，品质卓越”的经营理念，立志于将科技融入现实，以简单有效的方法解决复杂多变的土石方施工难题。

Sichuan Chang'an Chuanshanjia Technology Co., Ltd. was established in 2017 with a registered capital of 10 million RMB. Located in Chengdu, which enjoys the reputation of "Land of Abundance", it is a technology company dedicated to exploring the construction path of earth and stone engineering machinery.

The company team has rich experience in earthwork construction, adhering to the business philosophy of "scientific and technological innovation, excellent quality", determined to integrate technology into reality, and solve complex and changeable earthwork construction problems with simple and effective methods.

公司自成立以来不断加大研发投入，注重技术储备及布局。

随着2019年初S系列矿山勾撬臂和J系列分体岩石臂的问世，连同首款产品C系列一体式钩机臂，畅安穿山甲C/S/J系列产品布局已完成，产品覆盖了市面上大型挖掘机能装配的全部类型的岩石臂属具。

Since its establishment, the company has continuously increased investment in research and development, focusing on technical reserves and layout.

With the launch of the S series Hook Prying Arm and the J series Combined Rock Arm in early 2019, together with the first product C series Integrated Hook Arm, the layout of Chang'an Chuanshanjia C/S/J series products has been completed, the product covers all types of rock arm attachments that can be assembled in the large excavator market.

我们以敬业的态度传承工匠精神，以科学的态度弘扬工匠精神，让工匠精神成为推动我公司迈向未来的巨大精神力量！

在未来发展的道路上，让四川畅安穿山甲助您一臂之力！

We inherit the craftsman spirit with a dedicated attitude, carry forward the craftsman spirit with a scientific attitude, and make the craftsman spirit a huge spiritual force that drives our company into the future!

On the road of future development, let Sichuan Chang'an Chuanshanjia help you!



3000+

全球累计提供项目支持  
Project support cases around the world

100+

产品覆盖全球城市数  
Number of global cities covered by products

6

类项目覆盖

kinds of project coverage

矿山项目/Mining Project

公路项目/Road Project

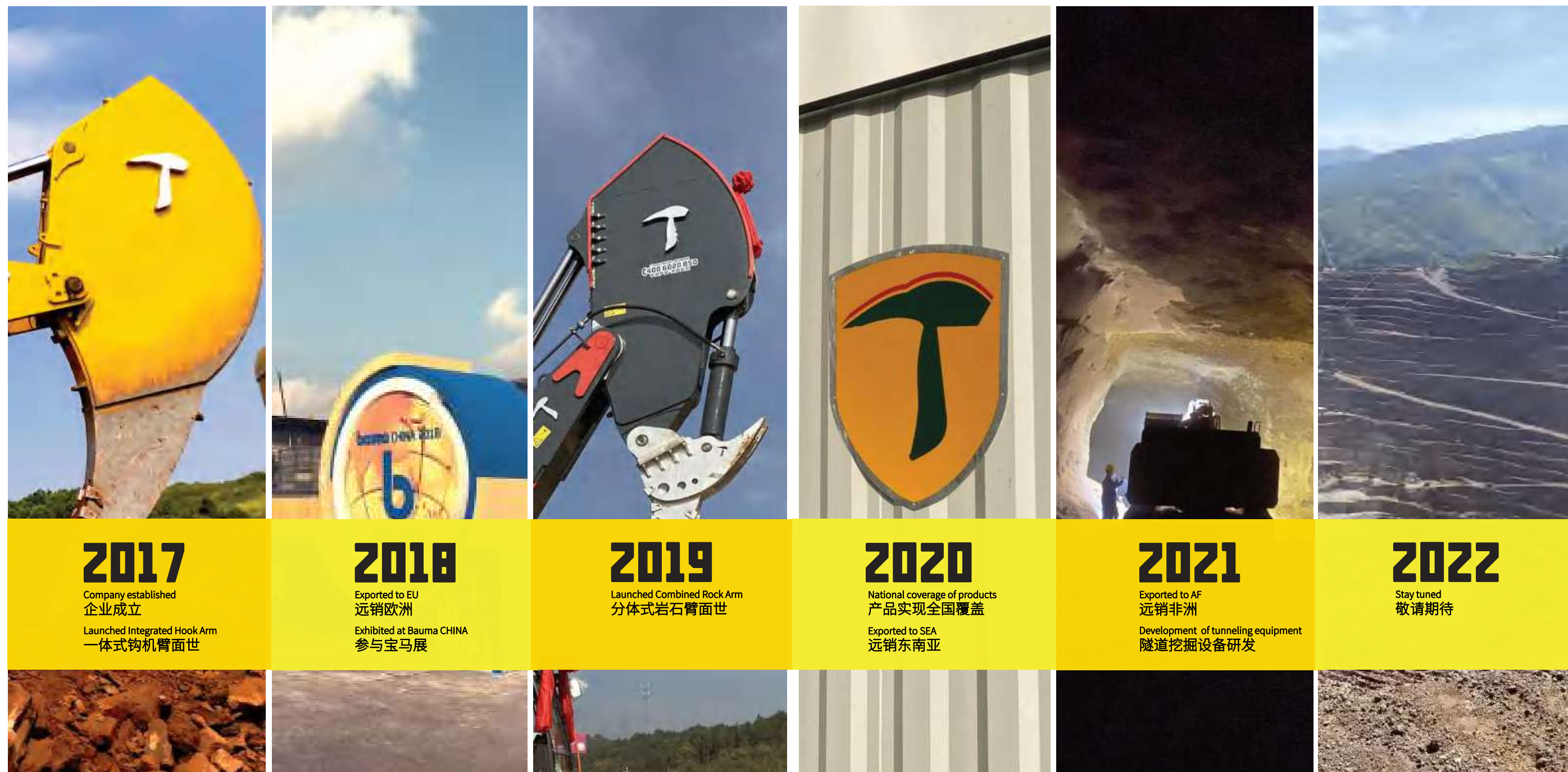
管沟项目/Pipe Trench Project

疏浚项目/Dredging Project

隧道项目/Tunnel Project

市政项目/Municipal Project





## Develpment trajectory

### 发展轨迹

“科技创新·品质卓越”

畅安穿山甲自成立以来，在探索免爆破施工领域的技术创新道路上，从未止步

“Scientific and technological innovation, excellent quality”

Since its establishment, Chang'an Chuanshanjia has never stopped in exploring innovative technologies in the field of blast-free construction



助您一臂之力！  
Wish be your helping hand!

助您一臂之力！  
Wish be your helping hand!

# Honors and qualifications

荣誉证书



做到更好，是我们一直以来的坚持。  
从产品细节到服务质量，畅安穿山甲从未停下精益优化的脚步。

产品的每一处细节，都代表着超500小时的研究与优化，每一份来自市场的建议与认可，都将转化为激励我们奋力前行的动力。

Doing better is our constant insistence.  
From product details to service quality, Chang'an Chuanshanjia has never stopped pursuit of lean optimization.

Every detail of the product represents more than 500 hours of research and development and optimization, and every suggestion and recognition from the market will be transformed into a driving force to encourage us to strive forward.

助您一臂之力！  
Wish be your helping hand!

助您一臂之力！  
Wish be your helping hand!

# Mission

以全球市场为中心，以客户需求为导向，助力客户创造价值，  
推动行业持续进步

Focusing on the global market and oriented by customer needs, helping customers create  
value and promoting the continuous progress of the industry



企业使命

杨安穿山甲一体式钩臂  
Integrated Hook Arm



# Global Market



## 全球市场

截止2022年，畅安穿山甲系列产品已覆盖亚洲、欧洲、非洲等多个地区。

By 2022, Chang'an Chuanshanjia series products have covered Asia, Europe, Africa and other regions.





助您一臂之力!  
Wish be your helping hand!

助您一臂之力!  
Wish be your helping hand!

# Production Environment

生产环境



畅安穿山甲产品生产中心坐落于成都龙泉驿工业园区。

包含产品生产、加工、仓储到物流全链路，为畅安穿山甲公司确立了完善的现代化生产系统。

按照ISO9001生产标准，严抓品控，产品质量与服务备受国际知名挖掘机品牌认可，在行业内享有优良口碑。

Chang'an Chuanshanjia production center is located in Chengdu Longquanyi Industrial Park.

Including the whole link of product production, processing, warehousing and logistics, it has established a complete modern production system for Chang'an Chuanshanjia Company.

In accordance with ISO9001 production standards and strict quality control, product quality and service have been recognized by internationally renowned excavator brands and enjoyed a good reputation in the industry.



一体式钩机臂  
Integrated  
Hook Arm



高效化岩石破碎解决方案  
Efficient rock crushing solution





# Integrated Hook Arm

## 一体式钩机臂

2017年，畅安穿山甲自主研发的实用新型专利技术产品：C系列一体式钩机臂正式面世。该产品通过对岩石臂小臂构造的独特创新设计，在传统岩石臂的基础上大量提升了土石方破碎效率与耐用性，兼具易于维保的优点。

In 2017, the utility model patented technology product independently developed by Chang'an Chuanshanjia: Integrated Hook Arm was officially launched. Through the unique and innovative design of the rock arm stick structure, this product greatly improves the earthwork crushing efficiency and durability on the basis of the traditional rock arm, and has the advantages of easy maintenance.

### 1. 深挖 Deeper

传统分体臂为避免损伤到铲斗油缸，施工深度往往受限于松土器本身的长度规格。一体式钩机臂，整合松土装置与小臂，大幅提高产品整体利用率，打破传统分体臂施工的深度阈值。

The construction depth of the traditional rock arm is often limited by the length specification of the ripper itself in order to avoid damage to the bucket cylinder. The Integrated Hook Arm integrates the ripper and the stick, which greatly improves the overall utilization rate of the product and breaks the depth threshold of traditional rock arm construction.

### 2. 快速 Faster

一体式钩机臂采用双泵多阀双进双出的中臂油缸设计，汇集铲斗油缸液压，为小臂收放动作带来双倍流量，缩短单次动作间隔，增加单钩破碎强度，为您带来更顺畅的土石方破碎体验。

The Integrated Hook Arm adopts the design of the middle arm cylinder with double inlet, double outlet, double pump and multi-valve, which collects the hydraulic pressure of the bucket cylinder, brings double the flow rate for the retraction and release action of the forearm, shortens the single action interval, and increases the single hook crushing strength. Bring you a smoother earth and stone crushing experience.

### 3. 耐用 More durable

主板采用低碳高强度合金钢组成，结构致密完整，故障率降低90%，辅以业内首创的耐磨块防护设计，低维护成本，高修复效率，让您不再为耽误施工而操心。

The main board is composed of low-carbon and high-strength alloy steel, with a compact and complete structure, and the failure rate is reduced by 90%. Coupled with the industry's first wear-resistant block protection design, low maintenance costs and high repair efficiency, you no longer need to worry about delaying construction.

### 2000

良好工况下挖掘深度可达2000mm

The excavation depth can reach 2000mm in good working conditions

### 30%

双泵油缸双倍动力，出钩效率提高30%

Double power of double pump oil cylinder, working efficiency increased by 30%

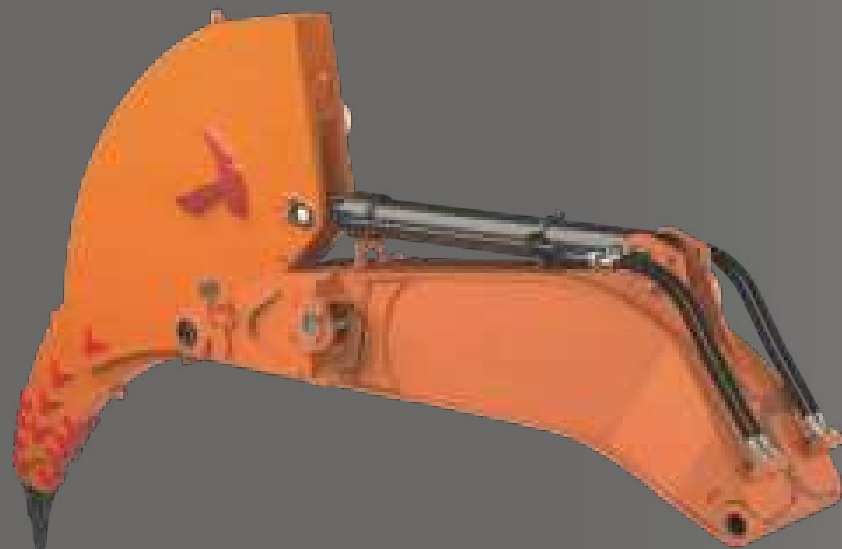
### 90%

一体式结构，故障率减少90%

Integrated structure, failure rate reduced by 90%



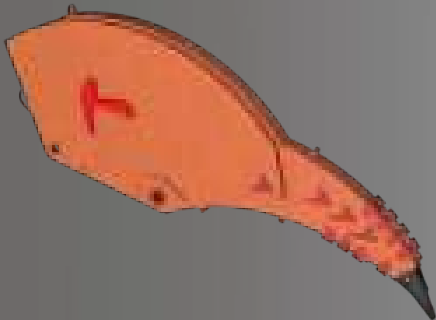
Product components  
组成部件



小臂/Arm

主板由整块高锰合金钢切割而成，一体式设计结构致密完整，配有齿座、斗齿、耐磨块等配件

It is cut from a whole piece of high manganese alloy steel. The integrated design has a compact and complete structure. It is equipped with tooth holder, bucket tooth, wear-resistant blocks and other accessories.



中臂油缸/Arm cylinder

一体式钩机臂仅需一根中臂油缸，无需配置铲斗油缸，可升级优质恒立油缸

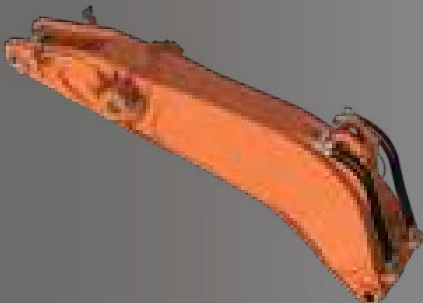
The integrated Hook Arm only needs one middle arm cylinder, no bucket cylinder, can be upgraded to Hengli cylinder with high quality



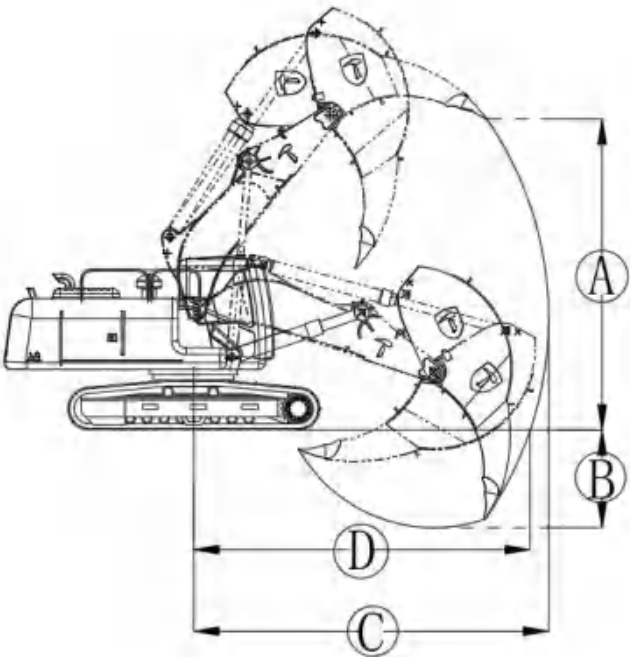
大臂与液压管路/Boom and hydraulic lines

定制化生产符合挖掘机主机的大臂，附带液压管路，您只需要准备好一台主机与大臂油缸即可

Customized production of the boom that matches the main engine of the excavator, with hydraulic pipelines, you only need to prepare a main engine and boom cylinders



Product parameters  
产品参数



项目/系列 Project/Series	CSJ300C (30吨/ton)	CSJ400C (40吨/ton)	CSJ700C (70吨/ton)	CSJ900C (90吨/ton)
大臂重量Boom weight	6000kg	8000kg	11000kg	11000kg
大臂长度Boom length	4700mm	5100mm	5500mm	6000mm
小臂重量Arm weight	10000kg	12000kg	17000kg	22000kg
小臂长度Arm length	5000mm	5900mm	6300mm	6500mm
最大挖掘高度 (A) Maximum excavation height	6500mm	7000mm	8200mm	8600mm
最大挖掘深度 (B) Maximum excavation depth	1800mm	2000mm	2200mm	2300mm
最大挖掘距离 (C) Maximum digging distance	6400mm	7100mm	7500mm	7800mm
最大挖掘范围 (D) Maximum excavation range	4500mm	4800mm	5000mm	5100mm

Applicable hardness  
适用工况

推荐机型

Recommended model

岩石抗压强度

Rock compressive strength



岩层硬度/设备 Rock hardness/Equipment	CSJ300C	30T破碎锤 Hydraulic breaker	CSJ400C	40T破碎锤 Hydraulic breaker	CSJ700C	70T破碎锤 Hydraulic breaker	CSJ900C	90T破碎锤 Hydraulic breaker
10-15Mpa	110-130m³/h	30-60m³/h	170-190m³/h	40-70m³/h	210-230m³/h	50-70m³/h	250-270m³/h	55-75m³/h
15-20Mpa			150-170m³/h	30-60m³/h	180-200m³/h	40-60m³/h	230-250m³/h	50-70m³/h
20-25Mpa					130-150m³/h	45-55m³/h	150-170m³/h	55-65m³/h
25-30Mpa							90-110m³/h	≤65m³/h

出方效率参考

Excavation efficiency reference



分体式岩石臂  
Combined  
Rock Arm



通用型岩石破碎解决方案  
Universal rock crushing solution





# Combined Rock Arm

## 分体式岩石臂

2019年，畅安穿山甲自主研发出了J系列分体式岩石臂产品，该产品更注重施工通用性，在松土器结构、松土器与小臂连接处等多个维度进行迭代优化，与常见岩石臂产品相比，稳定性与灵活性大大提升。

In 2019, Chang'an Chuanshanjia independently developed the J series Combined Rock Arm product, which pays more attention to construction versatility, and iteratively optimizes multiple dimensions such as the ripper structure and the connection between the ripper and the forearm. Compared with common rock arm products, the stability and flexibility are greatly improved.

### 1. 稳固

more stable

常见松土器采用嵌入式结构，在挖掘碎岩过程中，容易出现插销脱落等故障，分散挖掘动力。分体式岩石臂采用了整体式松土器结构，降低额外故障风险，聚力稳固，使用寿命更长。

The traditional ripper adopts an embedded structure. In the process of excavating the crushed rock, failures such as the bolt falling off are prone to occur, which disperses the excavation power. The Combined Rock Arm adopts a integral ripper structure to reduce the risk of additional failures, with stable cohesion and longer service life.

### 2. 灵活

more flexible

铲斗油缸独立增压，提升分体式岩石臂施工切入角度30°，便于操作员寻找岩石薄弱点破碎，开挖土方事半功倍。

The bucket oil cylinder is independently pressurized, and the construction cut-in angle of the Combined Rock Arm is increased by 30°, which is convenient for the operator to find the weak point of the rock and break it, and excavate the earth more easily.

### 3. 易更换

easy replacement

非整体化结构，松土器可拆卸，随时随地可进行更换，最大化保障项目施工流畅度。

Non-integrated structure, the ripper is removable and can be replaced anytime and anywhere, to guarantee the smoothness of project to maxium extent.

### 1500

良好工况下挖掘深度可达1500mm

The excavation depth can reach 1500mm in good working conditions

### 30°

施工切入角度提高30°

Construction cut-in angle increased by 30°

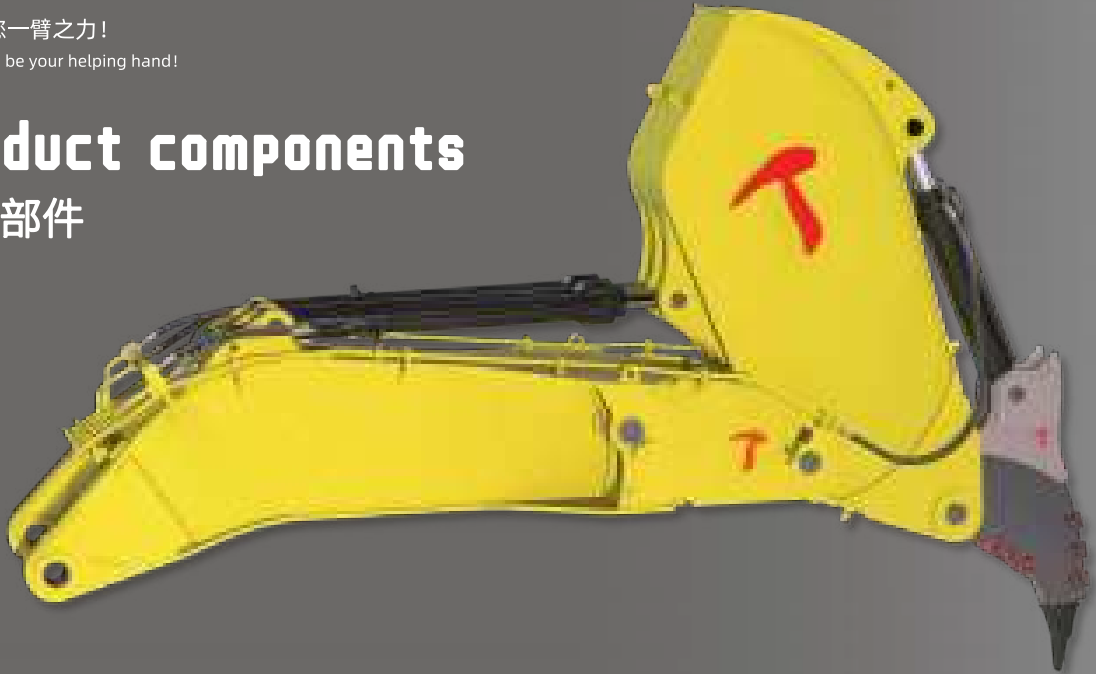
### 70%

覆盖式松土器，故障率减少70%

Covered ripper, failure rate reduced by 70%



Product components  
组成部件



小臂/Arm

由整块高锰合金钢切割焊接而成，结构致密完整，实际外形根据主机型号调整

It is cut and welded from a whole piece of high manganese alloy steel, the structure is compact and complete, and the actual shape is adjusted according to the model of the host



松土器/Ripper

专用松土器，附带齿座、耐磨块等配件

Special ripper, with accessories such as tooth holder, wear block and so on



油缸/Cylinder

包含中臂油缸与铲斗油缸，可升级优质恒立油缸

Including Arm cylinder & Bucket cylinder, can be upgraded to Hengli cylinder with high quality



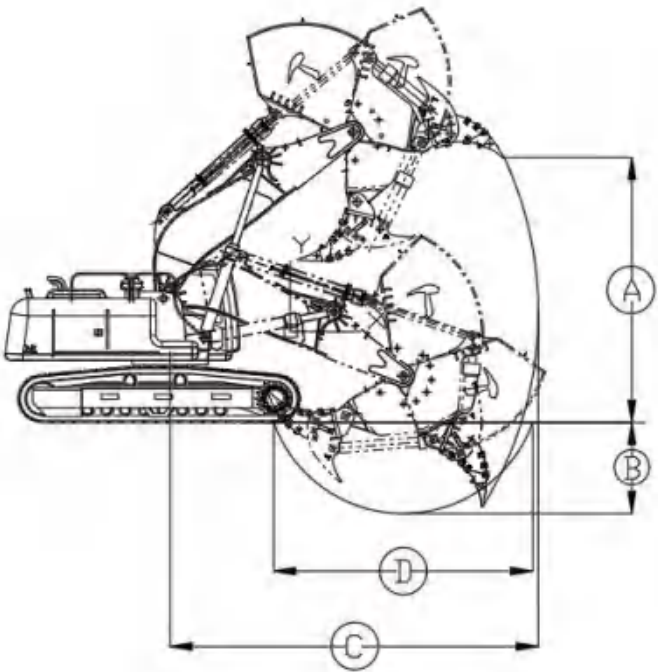
大臂与液压管路/Boom and hydraulic lines

定制化生产符合挖掘机主机的大臂，附带液压管路，您只需要准备好一台主机与大臂油缸即可

Customized production of the boom that matches the main engine of the excavator, with hydraulic pipelines, you only need to prepare a main engine and boom cylinders



Product parameters  
产品参数



项目/系列	CSJ400J (40吨/ton)	CSJ700J (70吨/ton)	CSJ900J (90吨/ton)
大臂重量Boom weight	8000kg	10000-11000KG	11000KG
大臂长度Boom length	4800mm	5000mm	5200-5400mm
小臂重量 (含松土器) Arm weight (includes ripper)	12000kg	17000kg	22000kg
松土器长度Ripper length	1750mm	1800mm	1800mm
最大挖掘高度 (A) Maximum excavation height	7000mm	8300mm	9600mm
最大挖掘深度 (B) Maximum excavation depth	1600mm	1800mm	2000mm
最大挖掘距离 (C) Maximum digging distance	6600mm	6900mm	7200mm
最大挖掘范围 (D) Maximum excavation range	4600mm	4300mm	4200mm

Applicable hardness  
适用工况

推荐机型

Recommended model

岩石抗压强度

Rock compressive strength



出方效率参考

Excavation efficiency reference

岩层硬度/设备 Rock hardness/Equipment	CSJ400J	40T破碎锤 Hydraulic breaker	CSJ700J	70T破碎锤 Hydraulic breaker	CSJ900J	90T破碎锤 Hydraulic breaker
10-15Mpa	150-170m³/h	40-70m³/h	190-210m³/h	50-70m³/h	230-250m³/h	55-75m³/h
15-20Mpa	130-150m³/h	30-60m³/h	170-190m³/h	40-60m³/h	220-240m³/h	50-70m³/h
20-25Mpa			150-170m³/h	45-55m³/h	170-190m³/h	55-65m³/h
25-30Mpa					120-140m³/h	≤65m³/h

实际效果受机型、工况、操作等多方因素影响，该数据仅供参考



# Mining Project

## 矿山项目

在中国，露天采矿场主要集中在西北地区（内蒙古、山西、新疆、宁夏、甘肃等地），畅安穿山甲已为多个煤矿、有色金属矿项目提供了完善的岩层剥离解决方案。

In China, open-pit mining area are mainly distributed in the Northwest (Inner Mongolia, Shanxi, Xinjiang, Ningxia, Gansu, etc.), and Chang'an Chuanshanjia has provided perfect rock stripping solutions for many coal mines and non-ferrous metal mine projects.



降本增效，提高岩层剥离收益率

Reduce cost and increase efficiency, improve the cost performance of rock stripping work



碎岩粒径更小，降低破碎机故障率，提高产量

The particle size of crushed rock is smaller, reducing the failure rate of the crusher and increasing the output



低噪音污染，绿色矿山更环保

Low noise pollution, green mines are more environmentally friendly



精准破碎，边坡稳定更安全

Precise crushing, stable slope and safer





破碎效率更高  
More efficient crushing



成本远低于炸药爆破，无需爆破资质  
The cost is much lower than explosive  
blasting, no blasting qualification is required



更安全&更环保  
Safer & Greener



碎岩粒径更小，运输更方便  
The particle size of the crushed rock is  
smaller and the transportation is more  
convenient

# Road Project

## 公路项目

公路项目具备周期长，投资大，工况复杂的特点。同时伴随着多个国家对于炸药爆破的监管政策逐渐收紧，采用岩石臂产品进行土石方破碎工作已经成为一种高性价比选择。

Road projects have the characteristics of long cycle, large investment and complex working conditions. At the same time, with the gradual tightening of the regulatory policies for explosive blasting in many countries, the use of rock arm products for earthwork crushing has become a cost-effective option..



# Pipe Trench Project

## 管线项目

管线项目大多横跨多个地区，通常会面对严格的环保要求，爆破资质申请十分复杂，一台拥有超深挖掘深度、并能减少重复作业的一体式钩机臂，能让您的施工选择更加灵活。

Most pipeline projects span multiple regions and usually meet strict environmental protection requirements. The application for blasting qualifications is very complicated. An Integrated Hook Arm with ultra-deep digging depth and reduced duplication of work gives you more flexibility in construction options.



2米超深挖掘  
2 meters deep excavation



一次完工，减少重复作业成本  
One-time completion, reducing repetitive operation costs



更安全&更环保  
Safer & Greener



免爆破，施工更灵活  
No blasting, more flexible construction





可深度涉水作业，一体式结构无故障风险

Deep wading operation is possible, and the integrated structure has no risk of failure



破碎力度更大，河床清淤效果更强

The crushing force is greater, and the dredging effect of the river bed is stronger



更安全&更环保

Safer & Greener



适合硬土河床，疏浚航道更稳固

It is suitable for hard soil riverbed, and the dredging channel is more stable

# Dredging Project

疏浚项目

疏浚项目在硬质岩河床施工时，往往会由于破碎锤无法涉水作业、水下爆破成本高等因素导致施工效率不理想，同时分体式岩石臂维护成本更高，在这种情况下，能够深水作业的一体式钩机臂具有巨大的经济效益优势。

When dredging projects are constructed in hard rock riverbeds, the construction efficiency is often unsatisfactory due to factors such as the inability of the breaker to wade into water and the high cost of underwater blasting. At the same time, the maintenance cost of the Combined Rock Arm is higher. The working Integrated Hook Arm has huge economic advantages.



助您一臂之力!  
Wish be your helping hand!

助您一臂之力!  
Wish be your helping hand!

# Tunnel project

## 隧洞项目

隧洞项目重视对地质水文条件的施工影响，特别是施工安全性，一体式钩机臂具备围岩扰动少，控制断面准确等安全施工特质，更契合隧洞项目施工。

Tunnel projects attach great importance to the construction impact on geological and hydrological conditions, especially construction safety. The Integrated Hook Arm has the characteristics of safe construction such as less disturbance of surrounding rock and accurate control section, which is more suitable for the construction of tunnel projects.



山体结构干扰小，施工更安全

Less interference from the mountain structure, safer construction



可控性更强，标准化施工无超欠挖

Stronger controllability, standardized construction without excessive or under-excavation



更安全&更环保

Safer & Greener



低故障率，维保成本低

Low failure rate, low maintenance cost



助您一臂之力！  
Wish be your helping hand!

助您一臂之力！  
Wish be your helping hand!



灵活施工，操作性更佳  
Flexible construction, better operability



低噪音环境影响  
Less noise impact on the environment



免爆施工，无需爆破资质  
Explosion-free construction, no blasting qualification required



比破碎锤更经久耐用，损耗率更低  
More durable and lower wear rate than breakers and lower wear rate

# Municipal Project

市政项目

市政工程往往工期较短，动迁量大，同时由于在城市内施工，对于环保的要求通常较高，多维度考量，灵活且低噪音的岩石臂产品，更符合市政施工的要求。

For municipal projects, the construction period is relatively short while the amount the relocation is really large. At the same time, due to the construction in the city, the requirements for environmental protection are usually higher. Multi-dimensional considerations, flexible and low-noise rock arm products are more in line with the requirements of municipal construction.





## Integrated Hook Arm 一体式钩机臂



1. 拆除原车动臂、小臂、挖斗及附属液压油缸
1. Remove the original vehicle boom, stick, bucket and auxiliary hydraulic cylinder



2. 将动臂安装在车架上，将大臂举升油缸与动臂铰链
2. Install the boom on the frame, combine the boom cylinder and boom

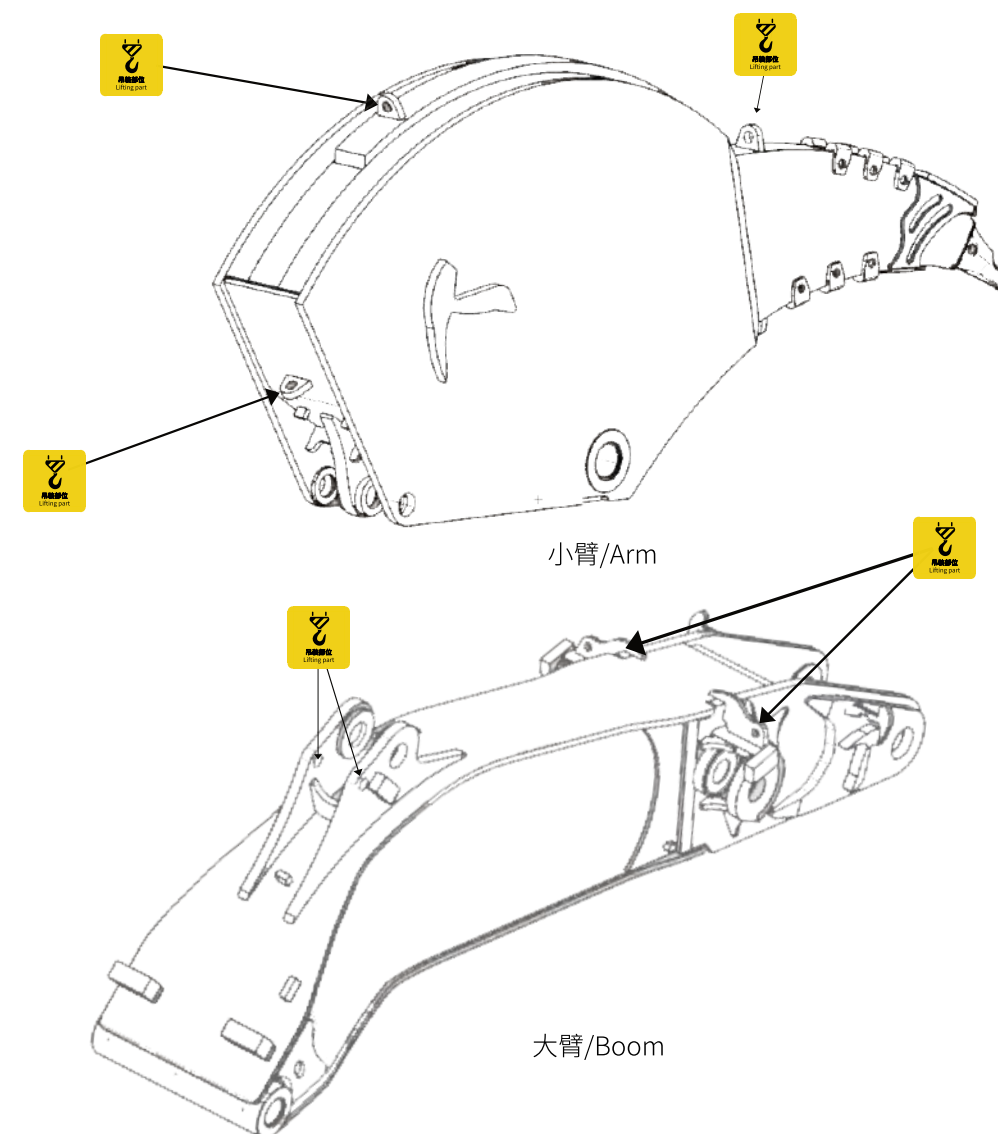


3. 将小臂与动臂铰链
3. Combine arm and boom



4. 将中臂油缸与小臂铰链并连接中臂油缸液压管路
4. Hinge the arm cylinder and arm, and connect the hydraulic pipeline of the arm cylinder

## Hoisting Guide 吊装指引







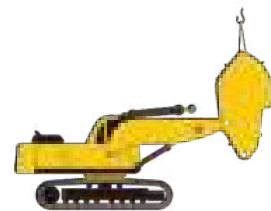
## Combined Rock Arm 分体式岩石臂



1. 拆除原车动臂、小臂、挖斗及附属液压油缸
1. Remove the original vehicle boom, stick, bucket and auxiliary hydraulic cylinder



2. 将动臂安装在车架上，将大臂举升油缸与动臂铰链
2. Install the boom on the frame, combine the boom cylinder and boom



3. 将小臂与动臂铰链
3. Combine arm and boom

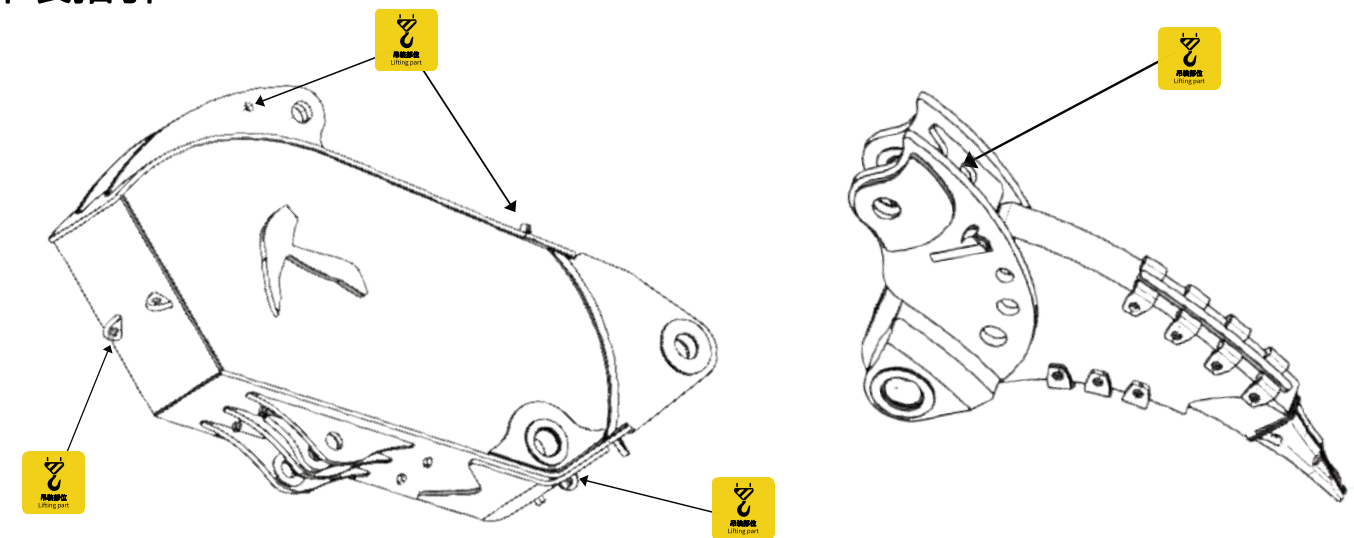


4. 将中臂油缸与小臂铰链并连接中臂油缸液压管路
4. Hinge the arm cylinder and arm, and connect the hydraulic pipeline of the arm cylinder



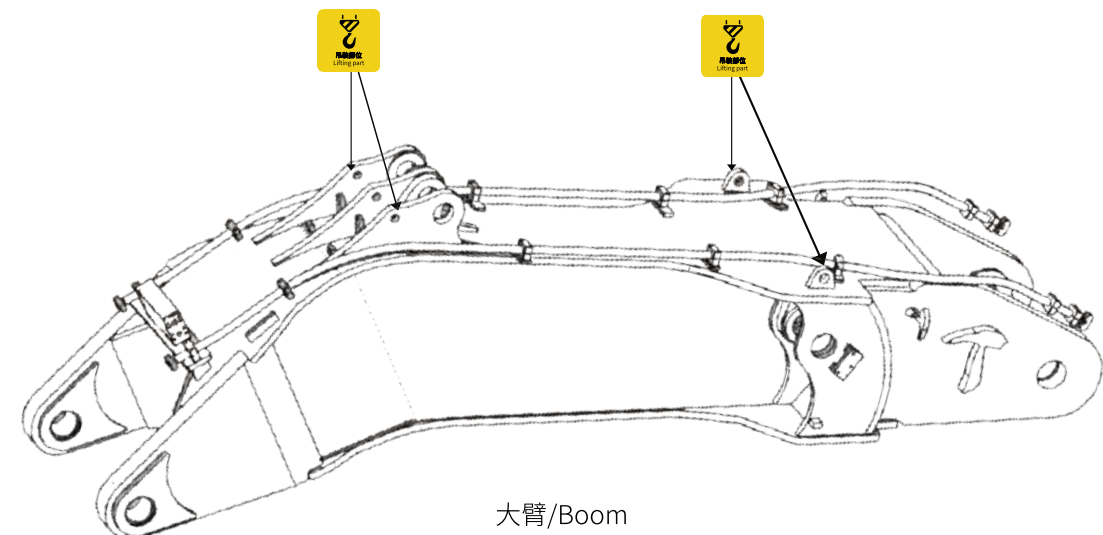
5. 将松土器与小臂铰链并连接铲斗油缸与防尘垫
5. Combine the ripper and arm, and connect the bucket cylinder and dust pad

## Hoisting Guide 吊装指引



小臂/Arm

松土器/Ripper



大臂/Boom



助您一臂之力!  
Wish be your helping hand!

助您一臂之力!  
Wish be your helping hand!



## Brands and models 品牌型号



三一485 一体式钩机臂  
SANY485 Integrated hook arm



三一500 一体式钩机臂  
SANY500 Integrated hook arm



三一950 一体式钩机臂  
SANY950 Integrated hook arm



三一750 分体式岩石臂  
SANY750 Combined rock arm





## Brands and models

品牌型号



徐工700 一体式钩机臂  
XCMG700 Integrated hook arm



徐工700 一体式钩机臂  
XCMG700 Integrated hook arm



徐工490 分体式岩石臂  
XCMG490 Combined rock arm



徐工700 分体式岩石臂  
XCMG700 Combined rock arm



助您一臂之力!  
Wish be your helping hand!

助您一臂之力!  
Wish be your helping hand!



**CAT**

## Brands and models 品牌型号



卡特349 一体式钩机臂  
CAT349 Integrated hook arm



卡特349 一体式钩机臂  
CAT349 Integrated hook arm



卡特349 分体式岩石臂  
CAT349 Combined rock arm



卡特349 分体式岩石臂  
CAT349 Combined rock arm



助您一臂之力!  
Wish be your helping hand!

助您一臂之力!  
Wish be your helping hand!



# HITACHI

**Brands and models**  
品牌型号



日立450 一体式钩机臂  
Hitachi 450 Integrated hook arm



日立470 一体式钩机臂  
Hitachi 470 Integrated hook arm



日立490 一体式钩机臂  
Hitachi 490 Integrated hook arm



日立890 分体式岩石臂  
Hitachi 890 Combined rock arm



助您一臂之力!  
Wish be your helping hand!

助您一臂之力!  
Wish be your helping hand!



**LIUGONG**

## Brands and models 品牌型号



柳工950 一体式钩机臂  
LiuGong950 Integrated hook arm



柳工956 一体式钩机臂  
LiuGong956 Integrated hook arm



柳工950 分体式岩石臂  
LiuGong950 Combined rock arm



柳工970 分体式岩石臂  
LiuGong970 Combined rock arm



助您一臂之力!  
Wish be your helping hand!

助您一臂之力!  
Wish be your helping hand!



# KOBELCO

## Brands and models 品牌型号



神钢350 一体式钩机臂  
KOBELCO350 Integrated hook arm



神钢460 一体式钩机臂  
KOBELCO460 Integrated hook arm



神钢480 一体式钩机臂  
KOBELCO480 Integrated hook arm



神钢500 分体式岩石臂  
KOBELCO500 Combined rock arm





**KOMATSU**

## Brands and models

品牌型号



小松360 一体式钩机臂  
KOMATSU360 Integrated hook arm



小松460 一体式钩机臂  
KOMATSU460 Integrated hook arm



小松460 一体式钩机臂  
KOMATSU460 Integrated hook arm



小松800 一体式钩机臂  
KOMATSU800 Integrated hook arm





## Brands and models 品牌型号



沃尔沃460 一体式钩机臂  
VOLVO460 Integrated hook arm



沃尔沃480 一体式钩机臂  
VOLVO480 Integrated hook arm



沃尔沃480 一体式钩机臂  
VOLVO480 Integrated hook arm



沃尔沃950 分体式岩石臂  
VOLVO950 Combined rock arm





# DOOSAN

**Brands and models**  
品牌型号



斗山500 一体式钩机臂  
DOOSAN500 Integrated hook arm



斗山500 一体式钩机臂  
DOOSAN500 Integrated hook arm



斗山500 一体式钩机臂  
DOOSAN500 Integrated hook arm



斗山500 分体式岩石臂  
DOOSAN500 Combined rock arm



助您一臂之力!  
Wish be your helping hand!

助您一臂之力!  
Wish be your helping hand!



**More...**  
更多...

**Brands and models**  
品牌型号



凯斯470 一体式钩机臂  
CASE470 Integrated hook arm



特雷克斯H30 一体式钩机臂  
TEREXH30 Integrated hook arm



临工500 一体式钩机臂  
SDLG500 Integrated hook arm



住友480 一体式钩机臂  
SUMITOMO480 Integrated hook arm